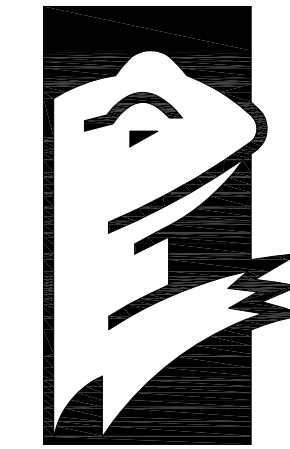


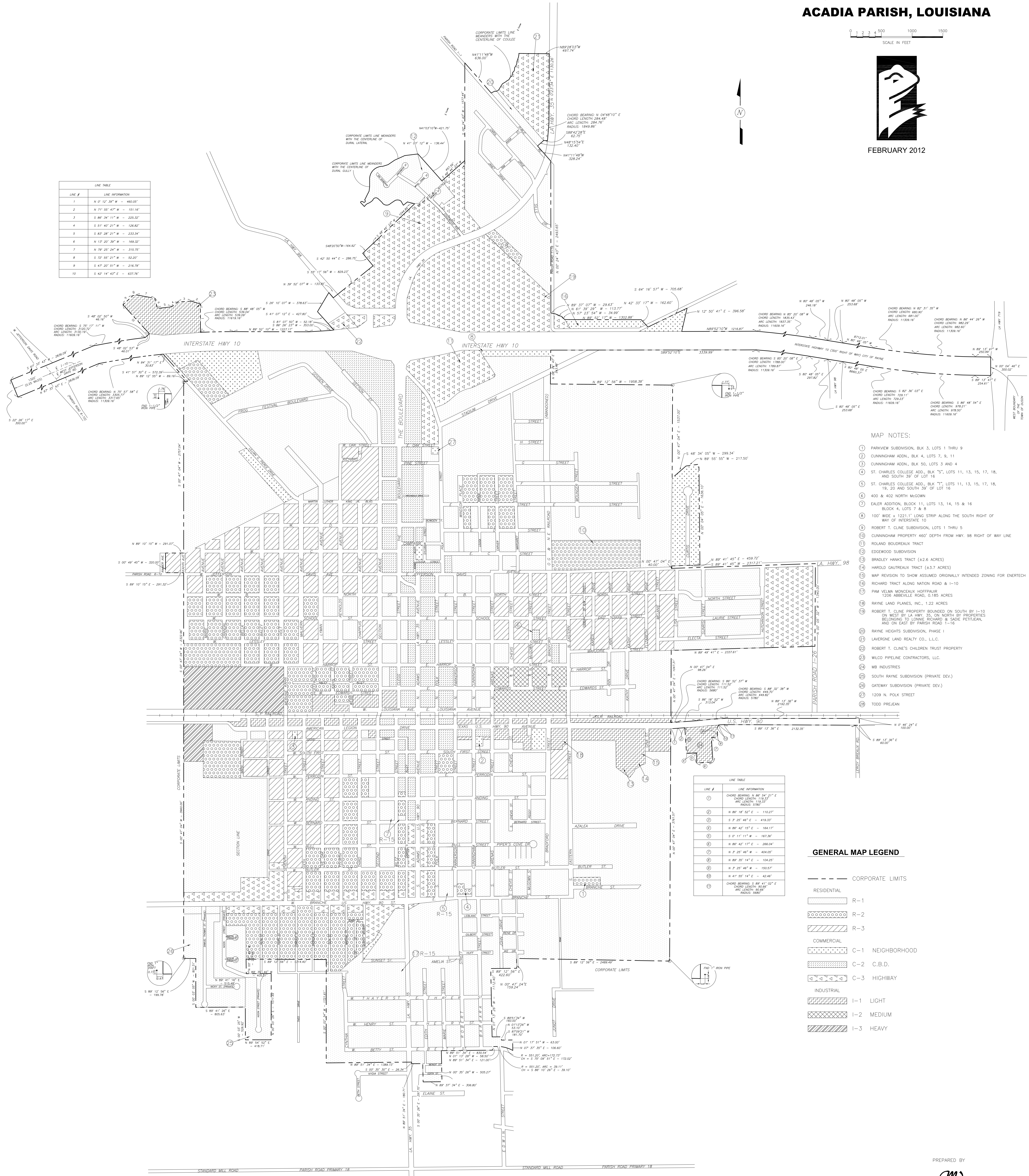
OFFICIAL ZONING MAP CITY OF RAYNE ACADIA PARISH, LOUISIANA

1 2 3 4 500 1000 1500
SCALE IN FEET



FEBRUARY 2012

LINE #	LINE INFORMATION
1	N 0° 12' 39" W - 460.05'
2	N 71° 55' 47" W - 154.16'
3	S 86° 54' 11" W - 225.32'
4	S 51° 40' 21" W - 128.82'
5	S 83° 28' 21" W - 233.34'
6	N 13° 20' 39" W - 168.32'
7	N 79° 25' 24" W - 315.75'
8	S 72° 55' 21" W - 52.20'
9	S 47° 20' 51" W - 216.79'
10	S 47° 14' 43" E - 637.76'



MAP NOTES:

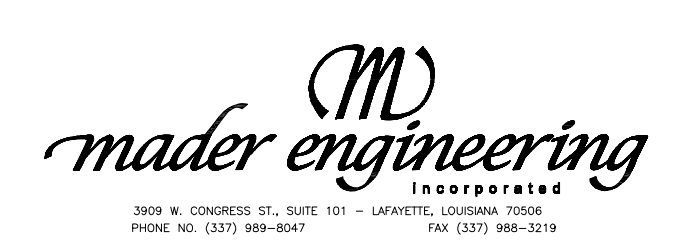
- 1 PARKVIEW SUBDIVISION, BLK 3, LOTS 1 THRU 9
- 2 CUNNINGHAM ADDN., BLK 4, LOTS 7, 9, 11
- 3 CUNNINGHAM ADDN., BLK 50, LOTS 3 AND 4
- 4 ST. CHARLES COLLEGE ADD., BLK "S", LOTS 11, 13, 15, 17, 18, AND SOUTH 3/4 OF LOT 16
- 5 ST. CHARLES COLLEGE ADD., BLK "T", LOTS 11, 13, 15, 17, 18, 19, 20 AND SOUTH 3/4 OF LOT 16
- 6 400 & 402 NORTH MCGOWN
- 7 EALER ADDITION, BLOCK 11, LOTS 13, 14, 15 & 16 BLOCK 4, LOTS 7 & 8
- 8 100' WIDE x 1221.1' LONG STRIP ALONG THE SOUTH RIGHT OF WAY OF INTERSTATE 10
- 9 ROBERT T. CLINE SUBDIVISION, LOTS 1 THRU 5
- 10 CUNNINGHAM PROPERTY 450' DEPTH FROM HWY. 98 RIGHT OF WAY LINE
- 11 ROLAND BOUDREAU TRACT
- 12 EDGEMOOD SUBDIVISION
- 13 BRADLEY HANKS TRACT (42.6 ACRES)
- 14 HAROLD GAUTREAUX TRACT (53.7 ACRES)
- 15 MAP REVISION TO SHOW ASSUMED ORIGINALLY INTENDED ZONING FOR ENERTECH
- 16 RICHARD TRACT ALONG NATION ROAD & I-10
- 17 PAM VELMA MONSIEUX HOFFPAUR 1206 ABBEVILLE ROAD, 0.185 ACRES
- 18 RAYNE LAND PLANES, INC., 1.22 ACRES
- 19 ROBERT T. CLINE PROPERTY BOUNDED ON SOUTH BY I-10 ON WEST BY LA HWY 55, ON NORTH BY PROPERTIES BELONGING TO LONNIE RICHARD & SADIÉ PETITJEAN, AND ON EAST BY PARISH ROAD 1-16
- 20 RAYNE HEIGHTS SUBDIVISION, PHASE 1
- 21 L'AVENUE LAND REALTY CO., L.L.C.
- 22 ROBERT T. CLINE'S CHILDREN TRUST PROPERTY
- 23 WILCO PIPELINE CONTRACTORS, LLC.
- 24 MB INDUSTRIES
- 25 SOUTH RAYNE SUBDIVISION (PRIVATE DEV.)
- 26 GATEWAY SUBDIVISION (PRIVATE DEV.)
- 27 1209 N. POLK STREET
- 28 TODD PREJEAN

LINE #	LINE INFORMATION
1	CHORD BEARING: N 89° 54' 21" E CHORD LENGTH: 175.33' ARC LENGTH: 116.13' RADIUS: 586.6'
2	N 80° 18' 52" E - 110.23'
3	S 2° 25' 46" E - 419.33'
4	N 80° 42' 15" E - 164.13'
5	S 0° 11' 11" W - 167.36'
6	N 80° 42' 17" E - 266.64'
7	N 2° 25' 46" E - 404.05'
8	N 89° 35' 14" E - 104.25'
9	N 2° 25' 46" E - 150.57'
10	N 41° 55' 14" E - 43.48'
11	CHORD BEARING: S 89° 41' 02" E CHORD LENGTH: 89.60' ARC LENGTH: 460'

GENERAL MAP LEGEND

- CORPORATE LIMITS
- RESIDENTIAL
 - R-1
 - R-2
 - R-3
- COMMERCIAL
 - C-1 NEIGHBORHOOD
 - C-2 C.B.D.
 - C-3 HIGHWAY
- INDUSTRIAL
 - I-1 LIGHT
 - I-2 MEDIUM
 - I-3 HEAVY

PREPARED BY



3004 N. GARDNER ST., SUITE 101 - LAKEVIEW, LOUISIANA 70006
PHONE NO. (504) 986-8047 FAX (504) 986-2019